



## Jeff Statz

Sr. Loan Officer, Statz Team

NMLS #36442

6226 Jeffers Drive Madison, WI 53719

Office: 608-572-7811

Mobile: 608-301-5112

Fax: 888-466-4068

[jeff@statz.us](mailto:jeff@statz.us)

[View My Website](#)

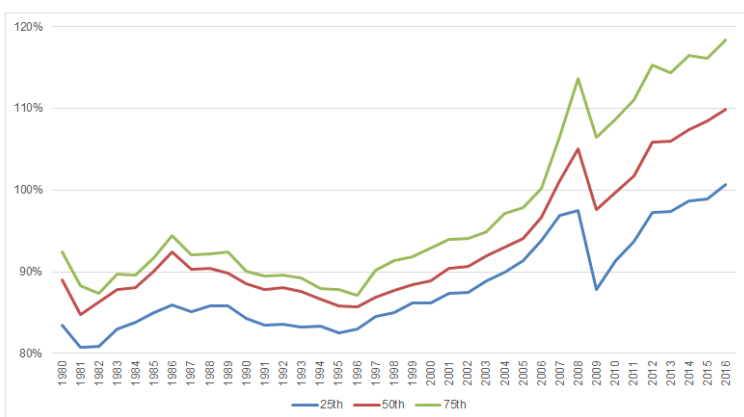
## Lower FICO Buyers Head For The Hills

The return of Americans to urban living, while well documented, may be a "head-fake" as far as the mortgage industry is concerned. Sam Khater, CoreLogic's Deputy Chief Economist says that inbound migration is happening, but not precisely in the way many think. This return to the cities has been driven by educated and affluent households, he says, which is leading to a **concentration of wealth** in cities and inner suburbs and that is driving home prices higher.

CoreLogic looked at the 20 largest MSA's, dividing the suburban areas in each into three **equally weighted rings** based on the percent of residential properties. This allowed an analysis where rings could be "fluid and expansive" in sprawling areas like Houston but small and compact in smaller, denser markets.

During the last two decades of the 20<sup>th</sup> Century middle ring suburban home prices were between **10 and 20 percent lower** than those in the city itself and in its inner suburb ring. However, since the early 2000s, when the urban rebound first started, prices in the inner suburb have soared compared to what was happening in the middle ones.

**Figure 1: Rising Inner Suburban Prices**  
Inner Suburb to Middle Suburb Price Ratios by Price Tier



Source: CoreLogic Public Records

© 2016 CoreLogic, Inc. All rights reserved

## National Average Mortgage Rates



Rate Change Points

### Mortgage News Daily

	Rate	Change	Points
30 Yr. Fixed	6.86%	-0.05	0.00
15 Yr. Fixed	6.31%	-0.02	0.00
30 Yr. FHA	6.32%	-0.06	0.00
30 Yr. Jumbo	7.04%	-0.03	0.00
5/1 ARM	6.53%	-0.02	0.00

### Freddie Mac

30 Yr. Fixed	6.78%	-0.08	0.00
15 Yr. Fixed	6.07%	-0.09	0.00

### Mortgage Bankers Assoc.

30 Yr. Fixed	7.00%	-0.03	0.60
15 Yr. Fixed	6.63%	+0.07	0.61
30 Yr. FHA	6.87%	-0.03	0.92
30 Yr. Jumbo	7.13%	+0.02	0.38
5/1 ARM	6.22%	-0.16	0.60

Rates as of: 7/26

## Recent Housing Data

		Value	Change
Mortgage Apps	Jul 10	206.1	-0.19%
Building Permits	Mar	1.46M	-3.95%
Housing Starts	Mar	1.32M	-13.15%
New Home Sales	Mar	693K	+4.68%
Pending Home Sales	Feb	75.6	+1.75%
Existing Home Sales	Feb	3.97M	-0.75%

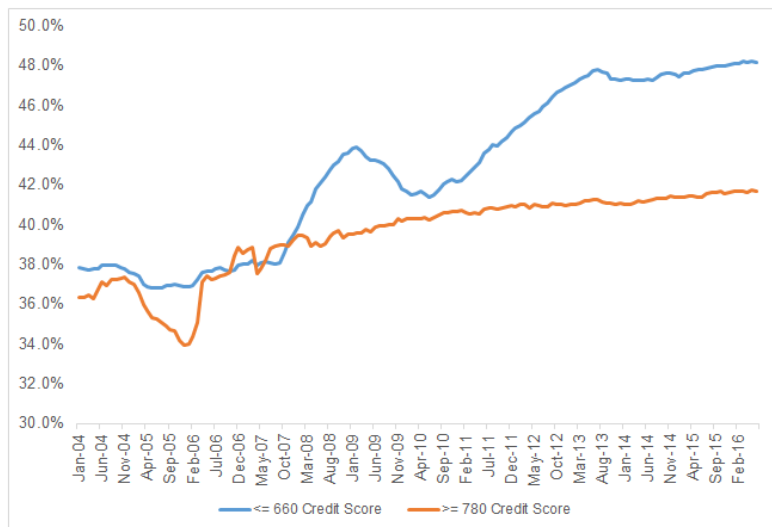
Consequently, there has been a countervailing trend for purchase mortgage applicants, especially lower credit borrowers, to **seek affordability further out into the suburbs**. During the housing boom in the mid-2000s, 38 percent of low credit purchase mortgage borrowers applied for loans in the outer suburbs. This shift continued even into the recession and by the fall of 2008 the percentage of lower credit borrowers in the outer suburbs reached 44 percent.

In mid-2010 that percentage declined and Khater attributes that to the temporary first-time homebuyer tax credit which allowed some borrowers to move closer in than they otherwise could. **After that tax credit expired**, the shift to the outer suburbs resumed.

By the middle of this year the percentage of lower credit purchase applicants applying in the outer suburbs was up to 48 percent, the **highest** since CoreLogic started tracking the phenomenon. Higher credit borrowers are also increasingly applying in those outlying areas, but the gain in that cohort is less than half that of lower credit borrowers and "there is a clear sorting of lower credit and income borrowers to the outer suburbs."

**Figure 2: Mortgage Applicants Moving to the City? No, They are Heading for the Hills**

Percent of Purchase Applicants Applying for homes in Outer Suburbs



Source: CoreLogic Loan Applications Data

© 2016 CoreLogic, Inc. All rights reserved

Khater, who was writing in the company's *Insights* blog, says this "increased sorting has **economic and policy implications** for spatial risk and increased concentration of lower credit borrowers in America's outer suburbs."

## Lending on Tap in Every State

Buyers in all 50 states trust my team to close their loans simply and on time.

Our team works hard to make your loan process appear simple. Even when you're already pre-approved with a lender, you'll benefit from talking with us.

Where are you in your process? Where are you trying to go? I'll share with you how we'll be a part of that journey.

**Jeff Statz**

