



Jeff Statz

Sr. Loan Officer, Statz Team

NMLS #36442

6226 Jeffers Drive Madison, WI 53719

Office: 608-572-7811

Mobile: 608-301-5112

Fax: 888-466-4068

jeff@statz.us

[View My Website](#)

Rapidly Rising Rates: Writing on The Wall For Housing?

The post-election spike in mortgage rates kicked into higher gear this week, with most lenders near the **worst levels in more than 2 years**. In bittersweet juxtaposition, this week's [Existing Home Sales](#) data (from October) was the best in nearly 10 years! Is the writing on the wall for the housing market? Yes and no.

First off, **let's put to bed** the question of whether a rapid rate spike affects housing and mortgage markets. The Mortgage Bankers Association's (MBA) [application data](#) is helpful in this endeavor for 2 reasons. First, it's a weekly report, thus keeping better pace with day-to-day changes in mortgage rates. Second, it includes both purchase and refi applications, allowing us to distinguish effects on home sales vs mortgage market activity.

The **best recent case study** of a rate spike's effects on housing/mortgage markets is the mid-2013 taper tantrum. In its first 6 weeks, the taper tantrum saw rates rise roughly 100 basis points (1%). Average 30yr fixed rates moved from 3.5% to 4.5% during that time. The following chart shows the changes in rates relative to the MBA's weekly purchase and refi applications numbers.

National Average Mortgage Rates



	Rate	Change	Points
--	------	--------	--------

Mortgage News Daily

30 Yr. Fixed	6.86%	-0.05	0.00
15 Yr. Fixed	6.31%	-0.02	0.00
30 Yr. FHA	6.32%	-0.06	0.00
30 Yr. Jumbo	7.04%	-0.03	0.00
5/1 ARM	6.53%	-0.02	0.00

Freddie Mac

30 Yr. Fixed	6.78%	-0.08	0.00
15 Yr. Fixed	6.07%	-0.09	0.00

Rates as of: 7/26

Market Data

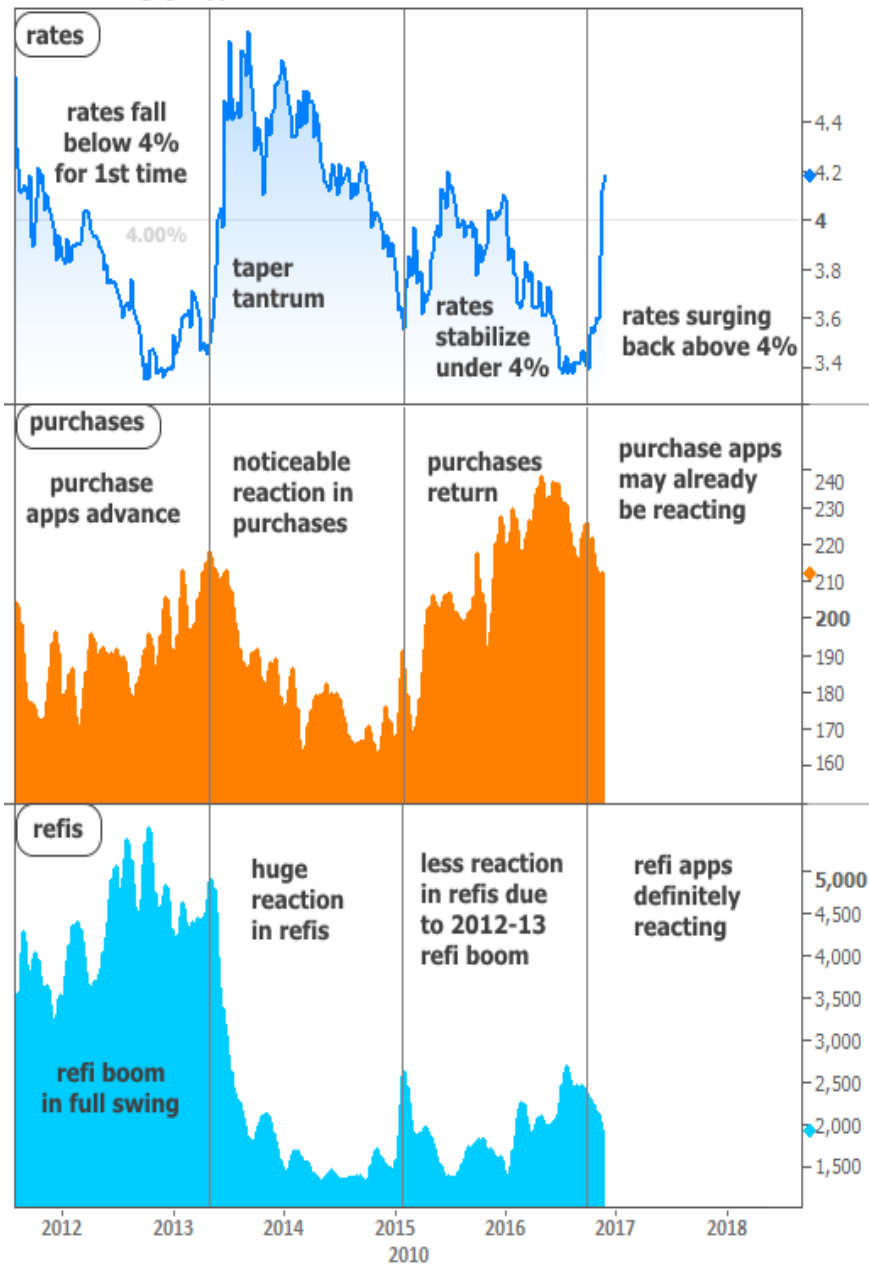
	Price / Yield	Change
MBS UMBS 5.5	99.68	+0.27
MBS GNMA 5.5	99.98	+0.13
10 YR Treasury	4.1958	-0.0474
30 YR Treasury	4.4523	-0.0305

Pricing as of: 7/26 5:59PM EST

Recent Housing Data

		Value	Change
Mortgage Apps	Jul 10	206.1	-0.19%
Building Permits	Mar	1.46M	-3.95%
Housing Starts	Mar	1.32M	-13.15%
New Home Sales	Mar	693K	+4.68%
Pending Home Sales	Feb	75.6	+1.75%
Existing Home Sales	Feb	3.97M	-0.75%
Builder Confidence	Mar	51	+6.25%

Rates vs Mortgage Apps



The chart leaves no doubt as to the potential for rapidly rising rates to take a toll, both on sales and mortgage activity in general. The chart also suggests the potential for varied outcomes depending on a few variables.

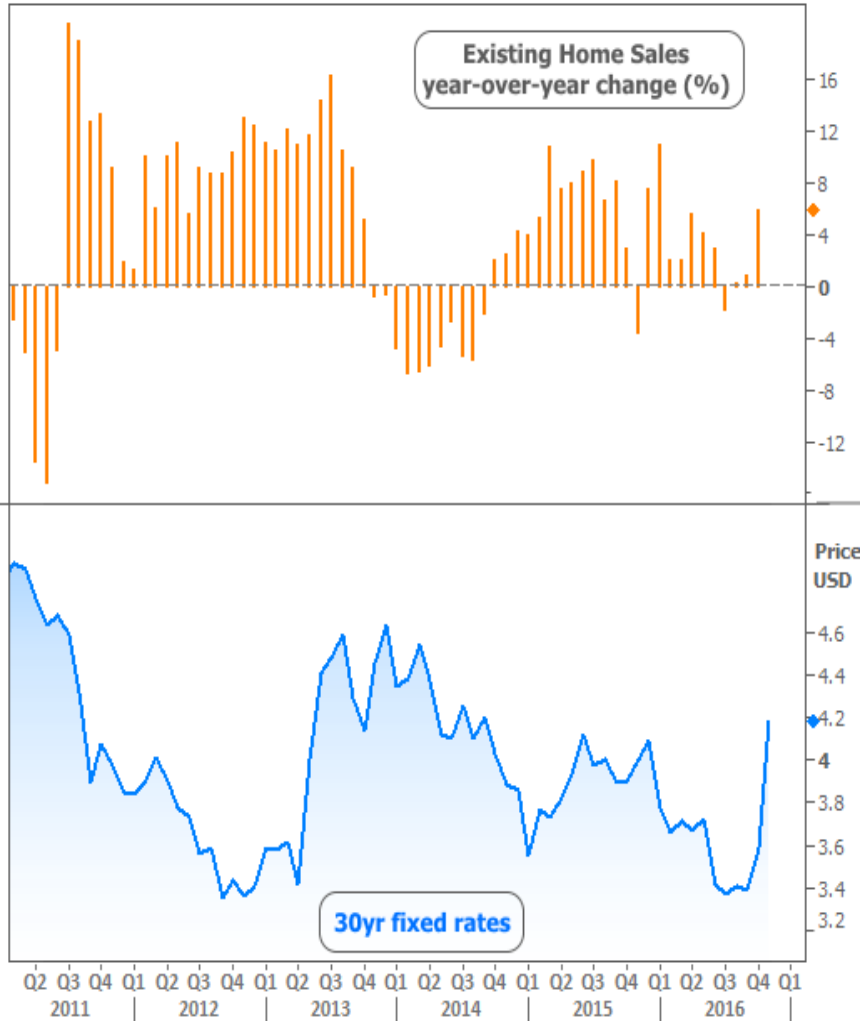
For instance, exceptionally low rates don't necessarily create huge refi demand on their own. After all, rates were near all-time lows recently, but refi applications were nowhere near recent highs, largely because homeowners and homebuyers already had the opportunity to lock in all-time lows during the 2012-13 refi boom.

We can conclude that in order to draw out peak refi demand, rates must fall far enough past the levels that were available to a large percentage of current homeowners. The upside to this, from a loan originator's standpoint, is that refi demand doesn't stand to lose as much ground as it did during the 2013 taper tantrum.

What about purchases as a function of rates? This is a hot topic among talking heads, with some arguing that purchases simply "don't care" about rising rates. Clearly that's not the case. In fact, purchase applications essentially turned on a dime as the taper tantrum spike began. It wasn't until rates stabilized under 4% that purchase apps began to rise again.

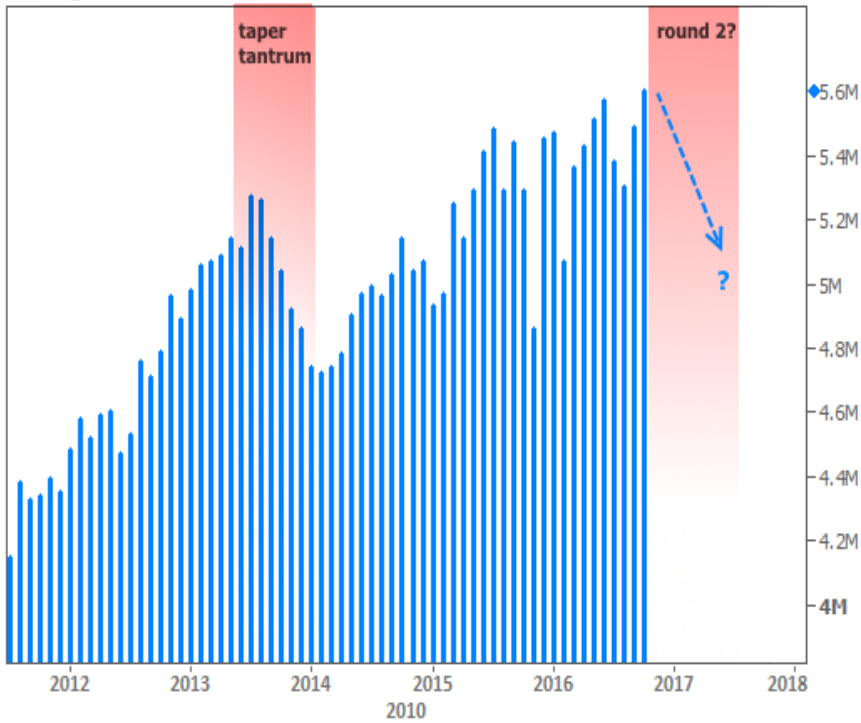
From there, we must simply ask ourselves how much movement constitutes a "big deal." This is subjective, of course. To many, the drop in Existing Home Sales in the 2nd half of 2013 was a big deal. After nearly 3 years of gains, sales fell into negative territory (annual basis) and remained there for almost an entire year.

Year-Over-Year Existing Sales

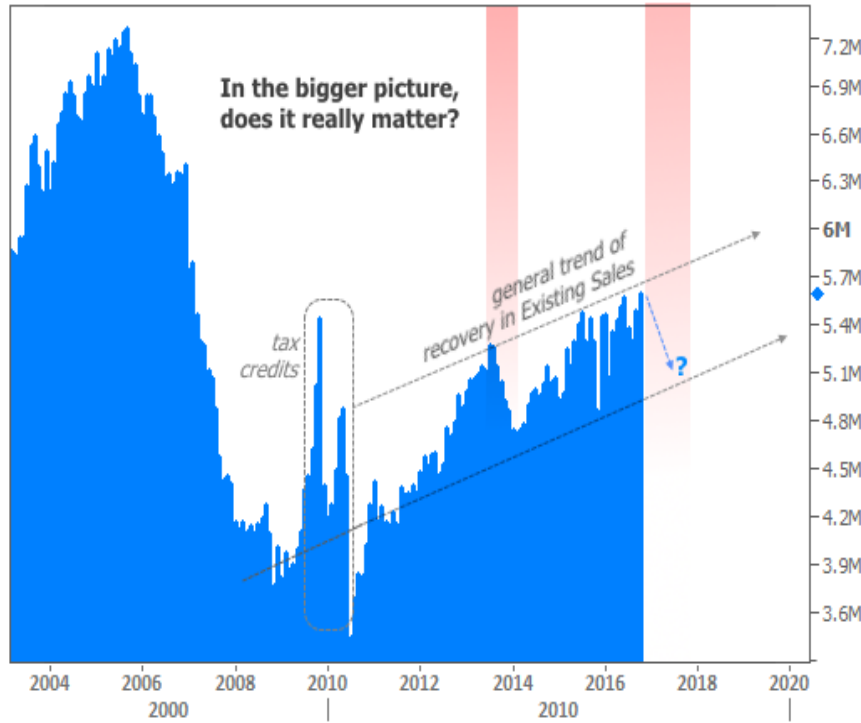


For a **counterpoint**, consider the longer term trend in the next chart. The upper pane of the chart shows recent trends in actual monthly home sales (not annual % change), with the taper tantrum effects highlighted. The lower pane, however, zooms out to include perspective that's been missing. There we can see the taper tantrum merely made for a course correction amid the bigger-picture trend.

Existing Home Sales



Existing Home Sales



This added perspective means **you're free to choose** the outlook that suits you. If you focus on shorter term effects, you may well conclude that the current spike in rates--rapidly approaching the size of the taper tantrum--means home sales are destined for a correction. If you focus on the longer term effects, you may subsequently conclude such a correction wouldn't be that big a deal in the bigger picture.

Ultimately, much depends on a host of additional variables, but the **underlying point is simple**: big rate spikes will always have an impact. The farther you step back, the smaller those impacts will look.

In other housing-related news to be filed under "perspective" this week, the [FHFA announced](#) an **increase in conforming loan limits** for Fannie and Freddie. The new limit will be \$424,100, up from \$417,000. To some buyers, this is insignificant, but to others, it could make all the difference in being able to afford the home of their dreams. Ideally, the limit can now keep pace with price appreciation going forward.

Subscribe to my newsletter online at: <http://mortgageratesupdate.com/statz>

Recent Economic Data

Date	Event	Actual	Forecast	Prior
Tuesday, Nov 22				
10:00AM	Oct Existing home sales (ml)	5.60	5.43	5.47
11:30AM	2-Yr Note Auction (bl)	13		
1:00PM	5-Yr Note Auction (bl)	34		
Wednesday, Nov 23				
7:00AM	w/e Mortgage Market Index	460.3		436.3
8:30AM	w/e Initial Jobless Claims (k)	251	250	235
8:30AM	Oct Durable goods (%)	+4.8	1.5	-0.3
10:00AM	Nov U Mich Sentiment Final (ip)	93.8	91.6	91.6
10:00AM	Oct New home sales-units mm (ml)	0.563	0.593	0.593
11:30AM	7-Yr Note Auction (bl)	28		
Thursday, Nov 24				
12:00AM	Thanksgiving Day			
Tuesday, Nov 29				
8:30AM	Q3 GDP Prelim (%)	+3.2	3.0	2.9
9:00AM	Sep CaseShiller 20 yy (%)	+5.1	5.2	5.1
10:00AM	Nov Consumer confidence	107.1	101.2	98.6
Wednesday, Nov 30				
7:00AM	w/e Mortgage Market Index	417.2		460.3
8:15AM	Nov ADP National Employment (k)	216.0	165	147
8:30AM	Oct PCE price index mm (%)	+0.2		0.2
8:30AM	Oct Personal income mm (%)	+0.6	0.4	0.3
8:30AM	Oct Consumption, adjusted mm (%)	+0.3	0.5	0.5
9:45AM	Nov Chicago PMI	57.6	52.0	50.6
10:00AM	Oct Pending homes index	110.0		110.0
Thursday, Dec 01				
8:30AM	w/e Initial Jobless Claims (k)	268	260	251
10:00AM	Oct Construction spending (%)	+0.5	0.5	-0.4
10:00AM	Nov ISM Manufacturing PMI	53.2	52.2	51.9
Friday, Dec 02				
8:30AM	Nov Non-farm payrolls (k)	+178	175	161

Event Importance:

No Stars = Insignificant

☆ Low

★ Moderate

★★ Important

★★★ Very Important

Date	Event	Actual	Forecast	Prior
8:30AM	Nov Unemployment rate mm (%)	4.6	4.9	4.9

Lending on Tap in Every State

Buyers in all 50 states trust my team to close their loans simply and on time.

Our team works hard to make your loan process appear simple. Even when you're already pre-approved with a lender, you'll benefit from talking with us.

Where are you in your process? Where are you trying to go? I'll share with you how we'll be a part of that journey.

Jeff Statz

