



Jay Rodriguez

Independent Mortgage Advisor, Arbor Financial Group
 NMLS# 902610 DRE# 02092450
 13809 Research Boulevard STE 568 Austin, Texas 78750

Office: 512-549-4568
 Mobile: 949-606-2410
 Fax: 888-337-3040
jay@rodriguez.team
[View My Website](#)

Powell Puts a Lid on The Rate Debate, But Where's The Bottom?

Every year, the Federal Reserve (aka "the Fed") gathers in Jackson Hole, WY with a bevy of other central bankers and academics to discuss and comment on monetary policy in a setting that's slightly less formal than normal. Despite the scenic backdrop, Jackson Hole speeches by the Fed Chair have a somewhat reliable history of relevance to financial markets--especially those that dictate interest rate movement.

In this year's case, the symposium was almost perfectly timed to give Chair Powell an opportunity to append his last major appearance in the press conference that followed the Fed meeting just over 3 weeks ago. Rates liked what he had to say back then as well, but in Friday's speech, he said it a bit more forcefully.

In not so many words, Powell made it clear that the default game plan is to cut rates at the September meeting just under 4 weeks from now. In fact, as far as financial markets are concerned, the only uncertainty is whether the rate cut will be the minimum 0.25% or double that amount.

To be fair and clear, that's about where the market ended up after the last speech, but that was followed by several big ticket market movers that temporarily convinced traders the Fed would be cutting by AT LEAST 0.50% a few short days later. For a few moments, the market was actually closer to a 0.75% cut!

National Average Mortgage Rates



| | Rate | Change | Points |
|--|------|--------|--------|
|--|------|--------|--------|

Mortgage News Daily

| | | | |
|--------------|-------|-------|------|
| 30 Yr. Fixed | 6.44% | -0.04 | 0.00 |
| 15 Yr. Fixed | 5.97% | -0.03 | 0.00 |
| 30 Yr. FHA | 5.90% | -0.04 | 0.00 |
| 30 Yr. Jumbo | 6.66% | -0.02 | 0.00 |
| 5/1 ARM | 6.32% | -0.06 | 0.00 |

Freddie Mac

| | | | |
|--------------|-------|-------|------|
| 30 Yr. Fixed | 6.46% | -0.40 | 0.00 |
| 15 Yr. Fixed | 5.62% | -0.54 | 0.00 |

Rates as of: 8/23

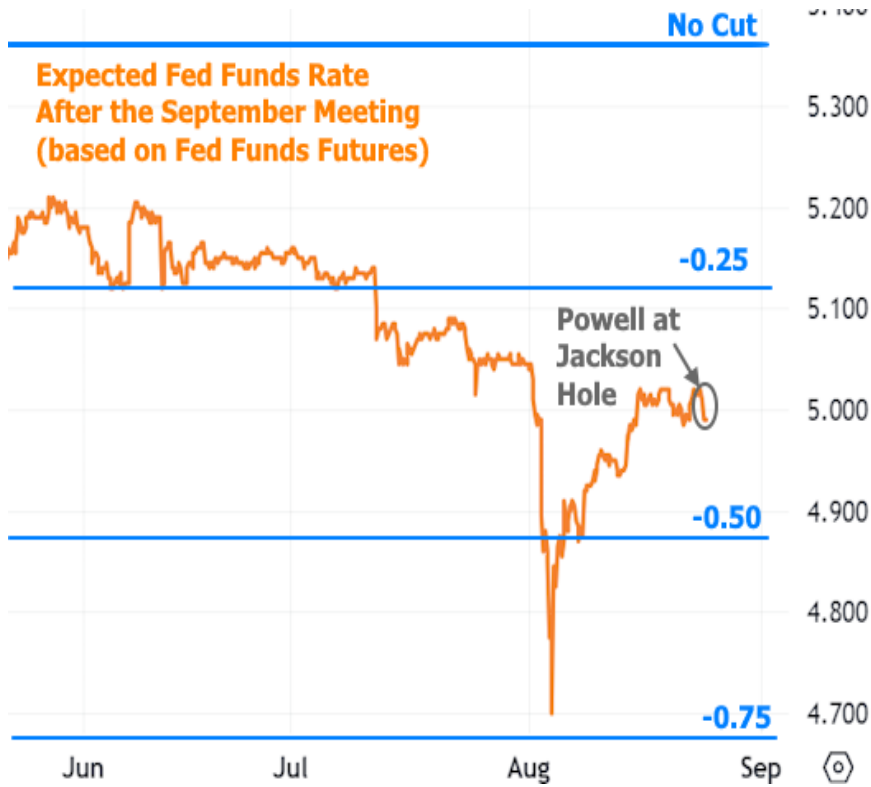
Market Data

| | Price / Yield | Change |
|----------------|---------------|---------|
| MBS UMBS 5.5 | 100.93 | +0.26 |
| MBS GNMA 5.5 | 100.83 | +0.22 |
| 10 YR Treasury | 3.7999 | -0.0531 |
| 30 YR Treasury | 4.0908 | -0.0309 |

Pricing as of: 8/23 5:59PM EST

Recent Housing Data

| | | Value | Change |
|---------------------|--------|-------|---------|
| Mortgage Apps | Aug 14 | 251.3 | +16.83% |
| Building Permits | Mar | 1.46M | -3.95% |
| Housing Starts | Mar | 1.32M | -13.15% |
| New Home Sales | Mar | 693K | +4.68% |
| Pending Home Sales | Feb | 75.6 | +1.75% |
| Existing Home Sales | Feb | 3.97M | -0.75% |
| Builder Confidence | Mar | 51 | +6.25% |



Over the 2 weeks that followed, several economic reports forced a rethink of those assumptions, thus putting Powell in a position to put a ceiling on near term rate expectations (rather than comment on how quickly rates might move lower). His speech certainly delivered said ceiling and also stayed clear of signaling any low rate exuberance. As can be seen in the chart above, it was ultimately small potatoes compared to recent volatility.

For their part, [mortgage rates](#) had a "nice" day, making a modest move down to the lowest levels in just over 2 weeks. For those who prefer their milestones a bit more grandiose, that also makes today the 3rd best day in well over a year.

30yr Fixed Mortgage Rate Index
(MND.News)

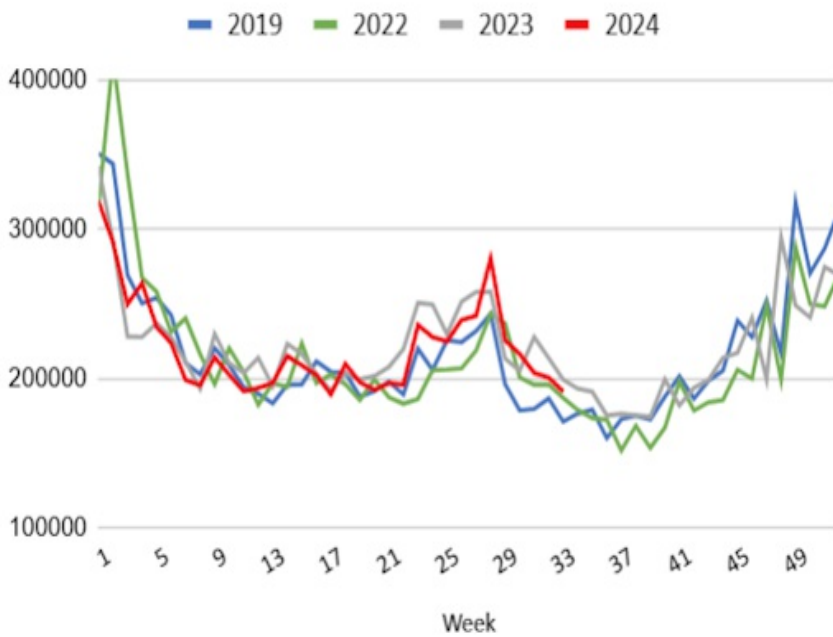


Despite the apparent clarity at the moment, it's good to keep the recent dichotomy in the data in mind. On the one hand, we had weak economic data in early August that helped drive rate expectations as low as they were. On the other hand, the economic reports in the following weeks helped push rates quickly back in the other direction. Since then, we've been consolidating in a narrower, relatively calmer range as seen in the chart of 10yr Treasury yields below.

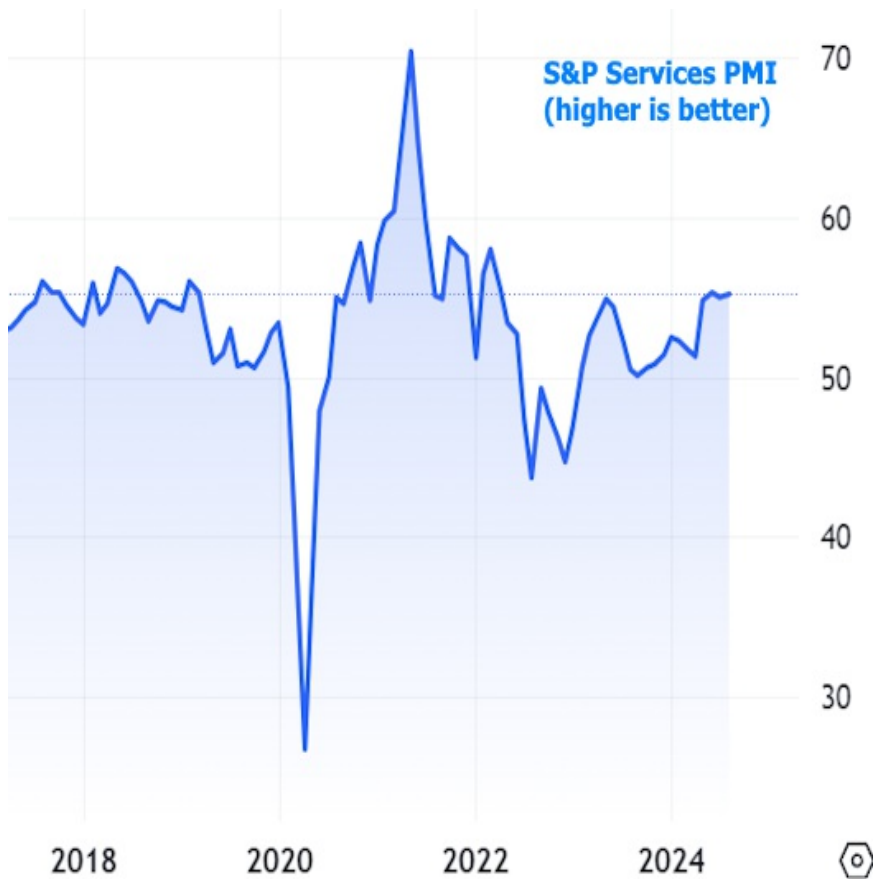


Even in the present week, economic data is far from signaling any sort of contraction or turmoil. The Jobless Claims report--the most timely major labor market indicator--continues falling in line with the last 2 years. This red line would need to be breaking up and away from the others in order for the more aggressive rate cut scenarios to pan out.

Jobless Claims, Week by Week, Not Seasonally Adjusted



The only other major report this week was the Services Purchasing Managers Index (PMI) from S&P Global. A PMI measures economic output with a reading over 50 generally indicating expansion. This month's came out at 55.2 which was just a hair higher than last month's and near the top of the recent range.



In the coming weeks (and especially in the first two weeks of September), we'll get even more economic data with the power to refine rate cut prospects. Just keep in mind that the Fed's rate cut would merely be the confirmation of what the rest of the rate market is already doing. In other words, mortgage rates and Treasuries have already priced in a rate cut. Now the data needs to avoid saying anything too glorious about the economy if the presently low rates are to stick around.

Additional improvements in rate would have to come from deterioration in the economic outlook, but there too, that's something that mortgage rates could price in well before the Fed meeting.

Subscribe to my newsletter online at: <http://mortgageratesupdate.com/jayrodriguez>

Recent Economic Data

| Date | Event | Actual | Forecast | Prior |
|--------------------------|---|--------|----------|-------|
| Wednesday, Aug 21 | | | | |
| 7:00AM | Aug/16 MBA Refi Index | 754.4 | | 889.3 |
| 7:00AM | Aug/16 MBA Purchase Index | 130.6 | | 137.7 |
| 10:00AM | Mar Non Farm Payrolls Annual Revision (%) | -818K | | -187K |
| 2:00PM | FOMC Minutes | | | |
| Thursday, Aug 22 | | | | |

Event Importance:

- No Stars = Insignificant
- ☆ Low
- ★ Moderate
- ★★ Important
- ★★★ Very Important

| Date | Event | Actual | Forecast | Prior |
|-----------------------|------------------------------|--------|----------|--------|
| 9:45AM | Aug S&P Global Services PMI | 55.2 | 54 | 55.0 |
| 10:00AM | Jul Existing home sales (ml) | 3.95M | 3.93M | 3.89M |
| Friday, Aug 23 | | | | |
| 10:00AM | Jul New Home Sales (ml) | 0.739M | 0.63M | 0.617M |
| 10:00AM | Fed Chair Powell Speech | | | |

Upcoming Economic Data

| Date | Event | Forecast | Prior |
|-------------------------|---|----------|-------|
| Monday, Aug 26 | | | |
| 8:30AM | Jul Durable goods (%) ☆ | 4% | -6.6% |
| Tuesday, Aug 27 | | | |
| 9:00AM | Jun FHFA Home Prices y/y (%) ☆ | | 5.7% |
| 9:00AM | Jun Case Shiller Home Prices-20 y/y (%) ☆ | 7.1% | 6.8% |
| 10:00AM | Aug CB Consumer Confidence (%) ☆ | 100.1 | 100.3 |
| Thursday, Aug 29 | | | |
| 8:30AM | Q2 GDP (%) ★ | 2.8% | 1.4% |
| 8:30AM | Aug/24 Jobless Claims (k) ☆ | 234K | 232K |
| 10:00AM | Jul Pending Home Sales (%) ☆ | 0.2% | 4.8% |
| Friday, Aug 30 | | | |
| 8:30AM | Jul Core PCE Inflation (y/y) (%) ★ | | 2.6% |
| 8:30AM | Jul Core PCE (m/m) (%) ★★ | 0.2% | 0.2% |
| 9:45AM | Aug Chicago PMI ★ | 44.6 | 45.3 |
| 10:00AM | Aug Consumer Sentiment (ip) ☆ | 67.8 | 66.4 |

Choose the Right Independent Home Loan Expert

Your Trusted Nationwide Mortgage Advisor

With over a decade of experience, Jay Rodriguez is your go-to mortgage broker. Originally from Southern California, Jay has 13 state licenses and a deep understanding of the mortgage landscape. Whether you're in Texas or beyond, his commitment to personalized service, competitive rates, and on-time closings sets him apart. First-time buyers, refinancers, and investors alike benefit from his expertise. Contact Jay today to turn your homeownership dreams into reality!

Jay Rodriguez

